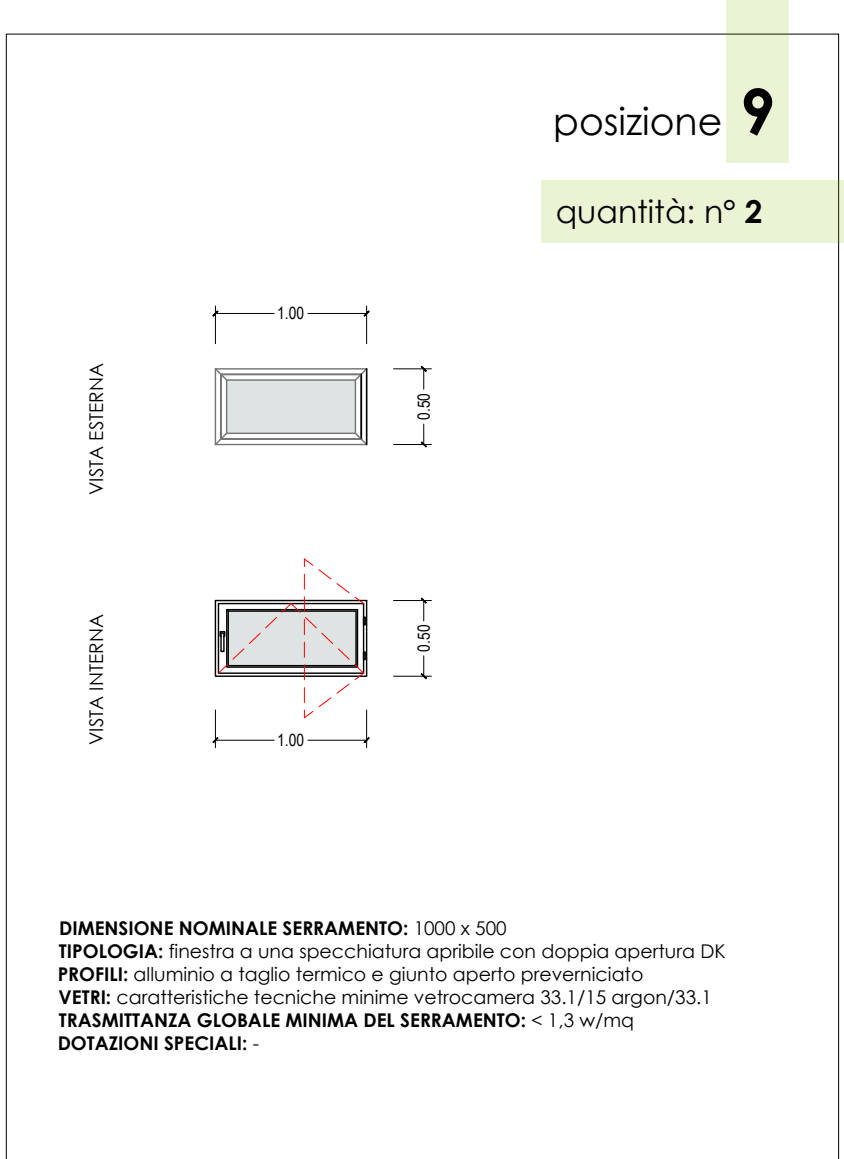
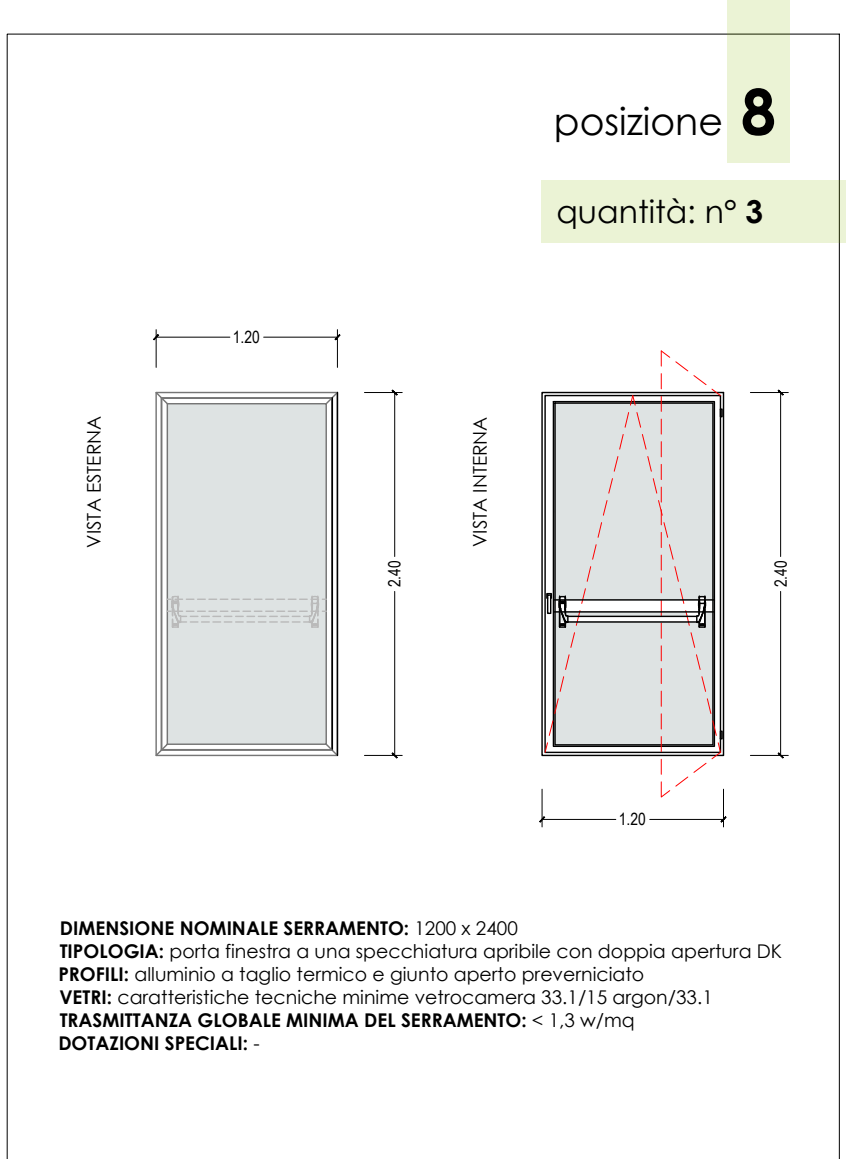
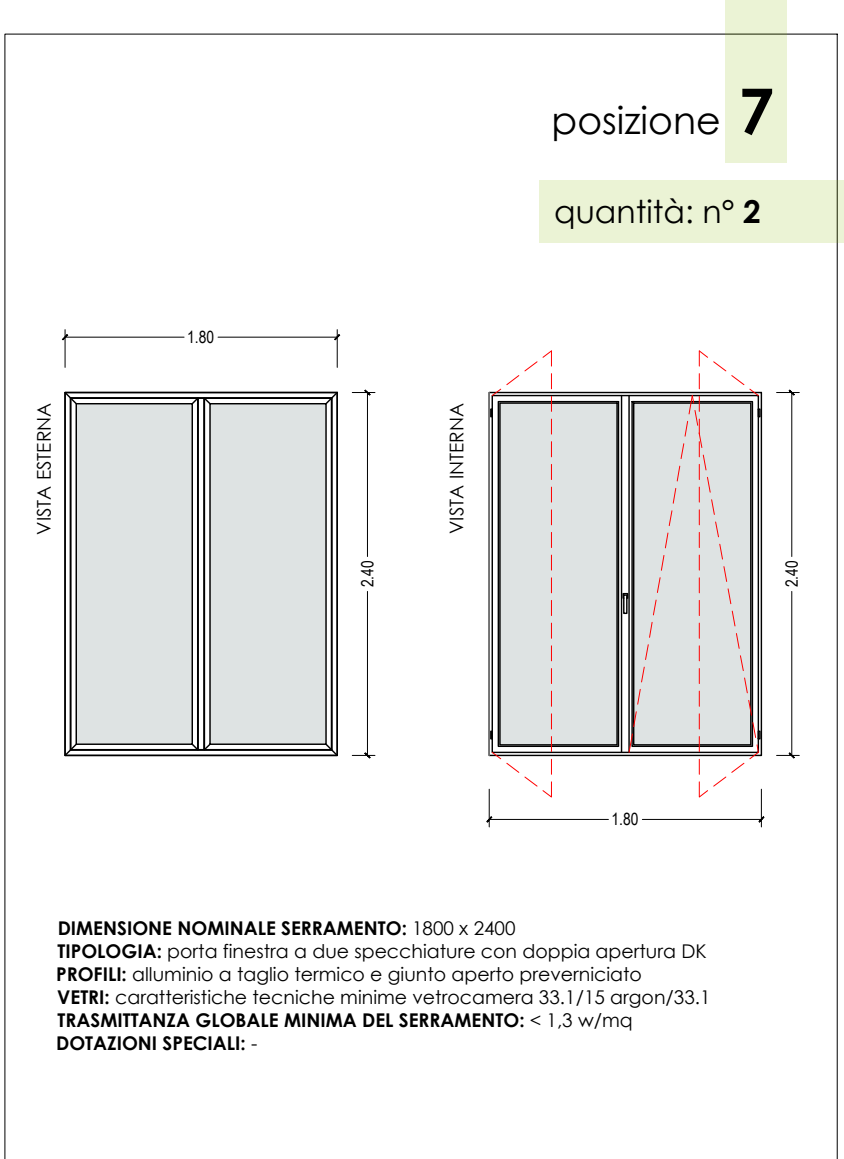
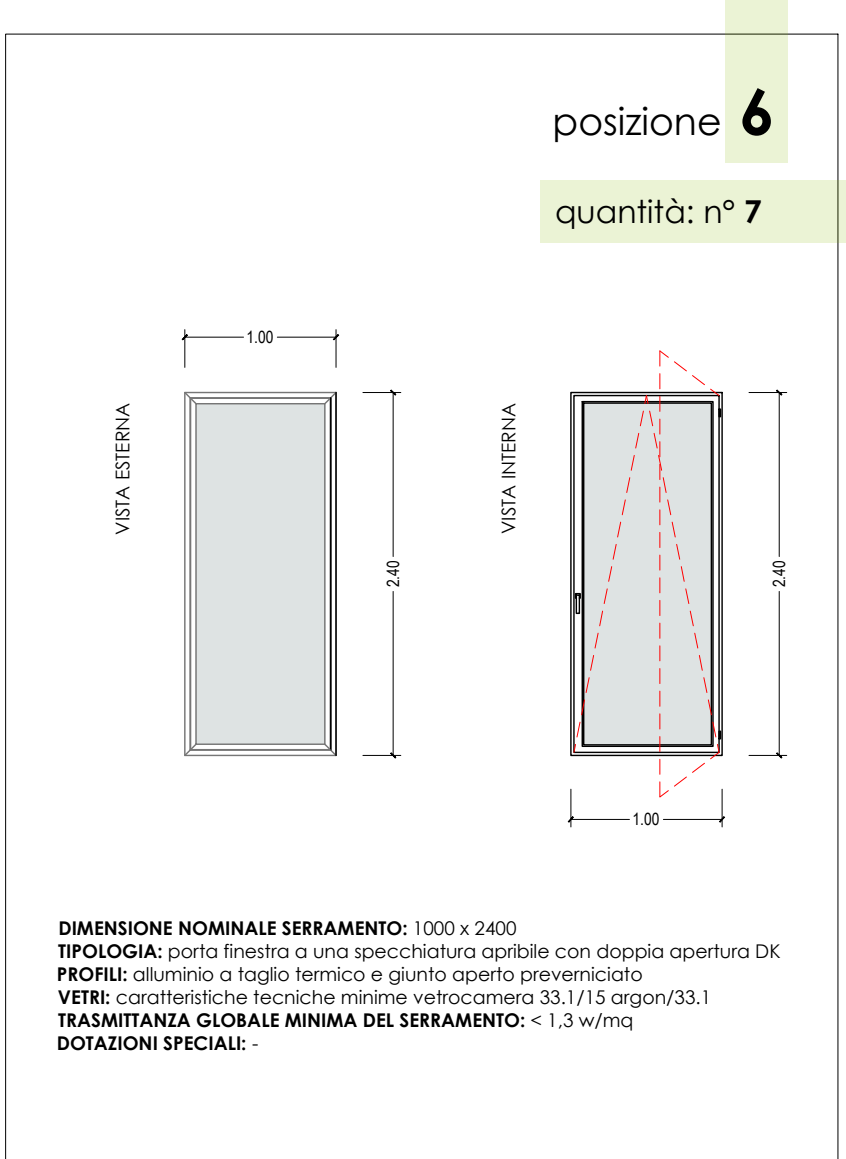
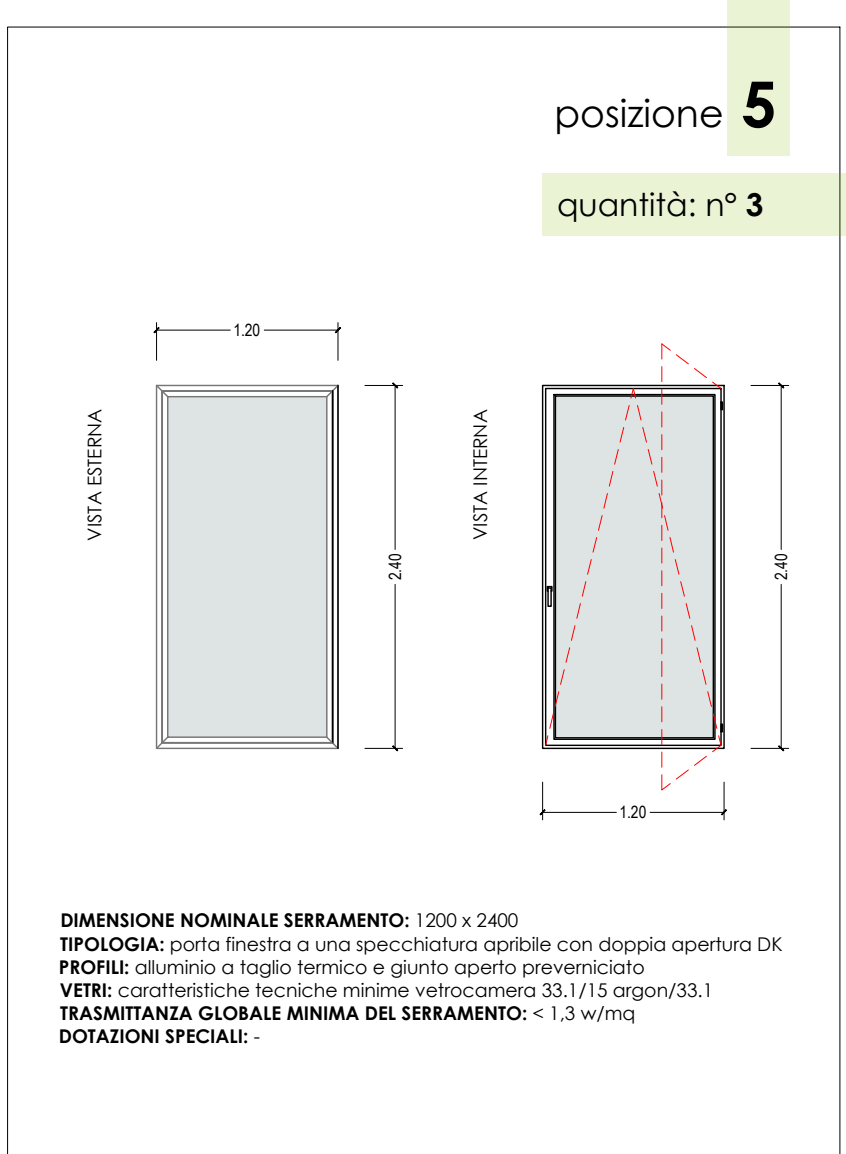
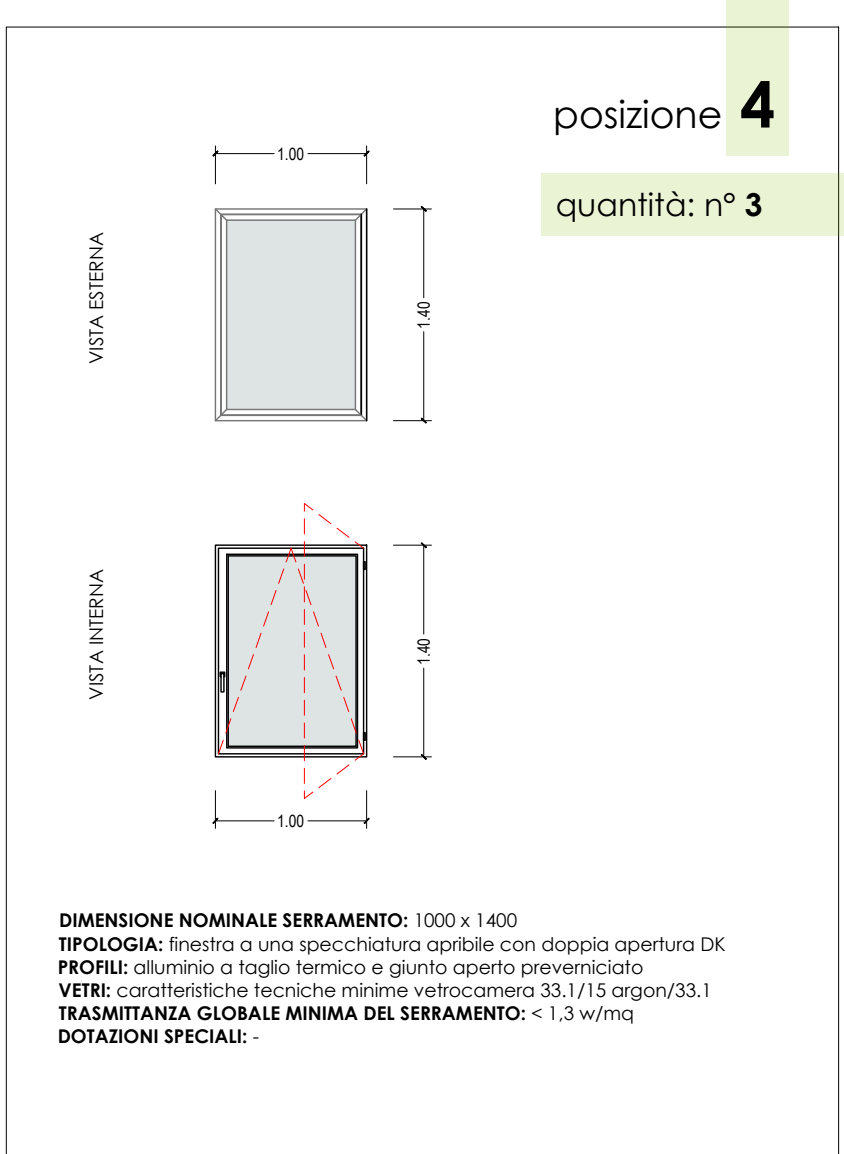
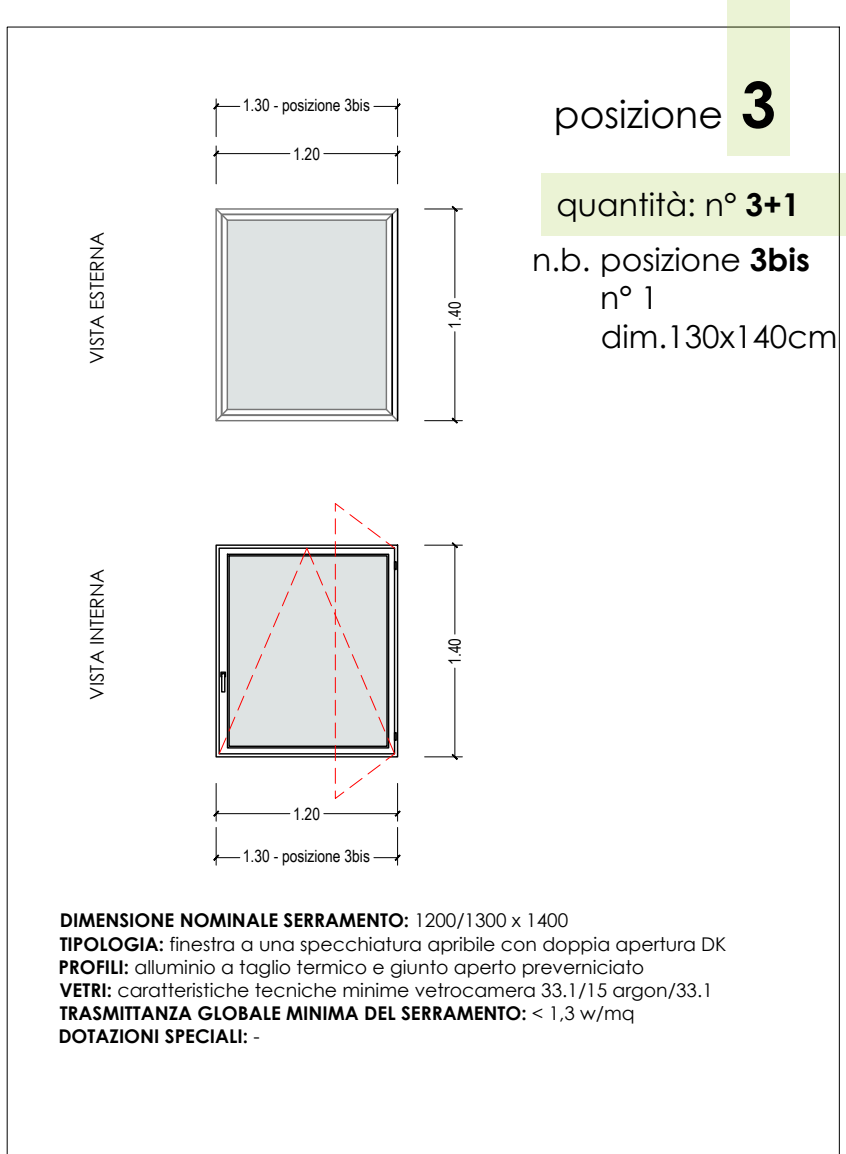
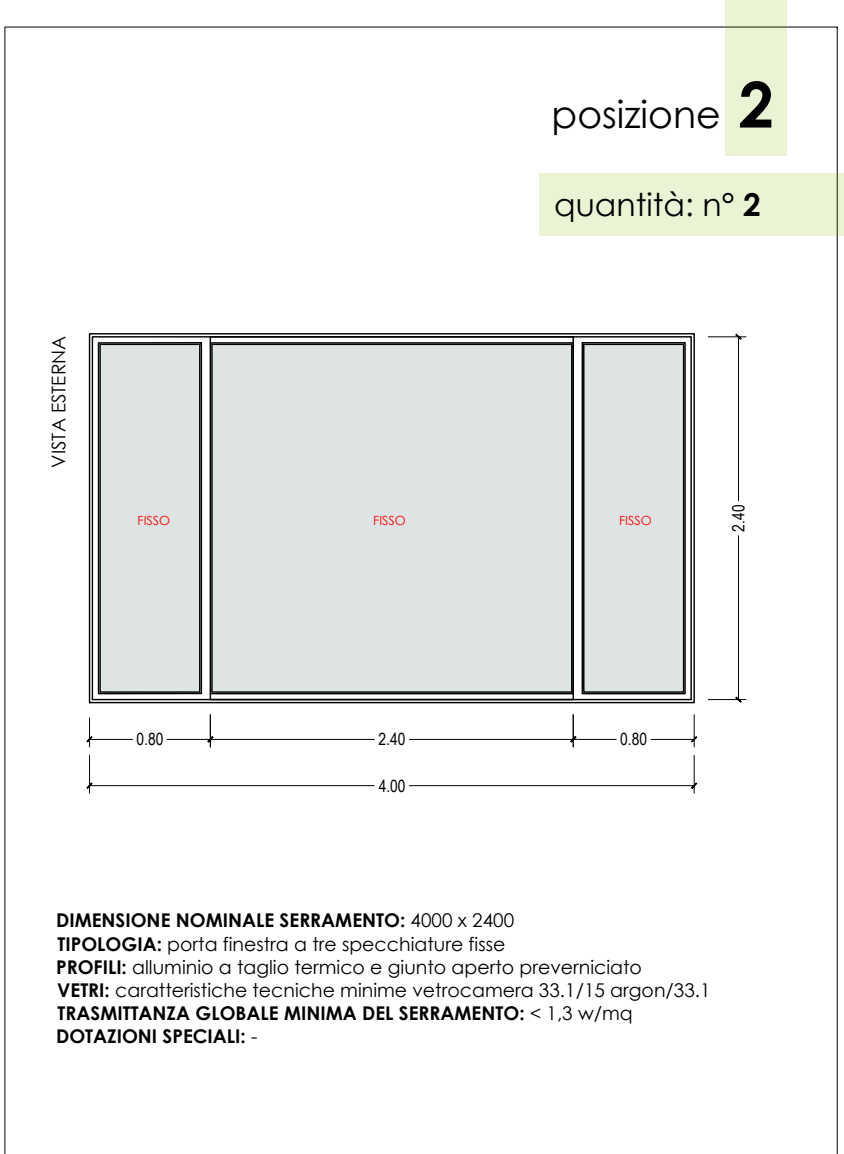
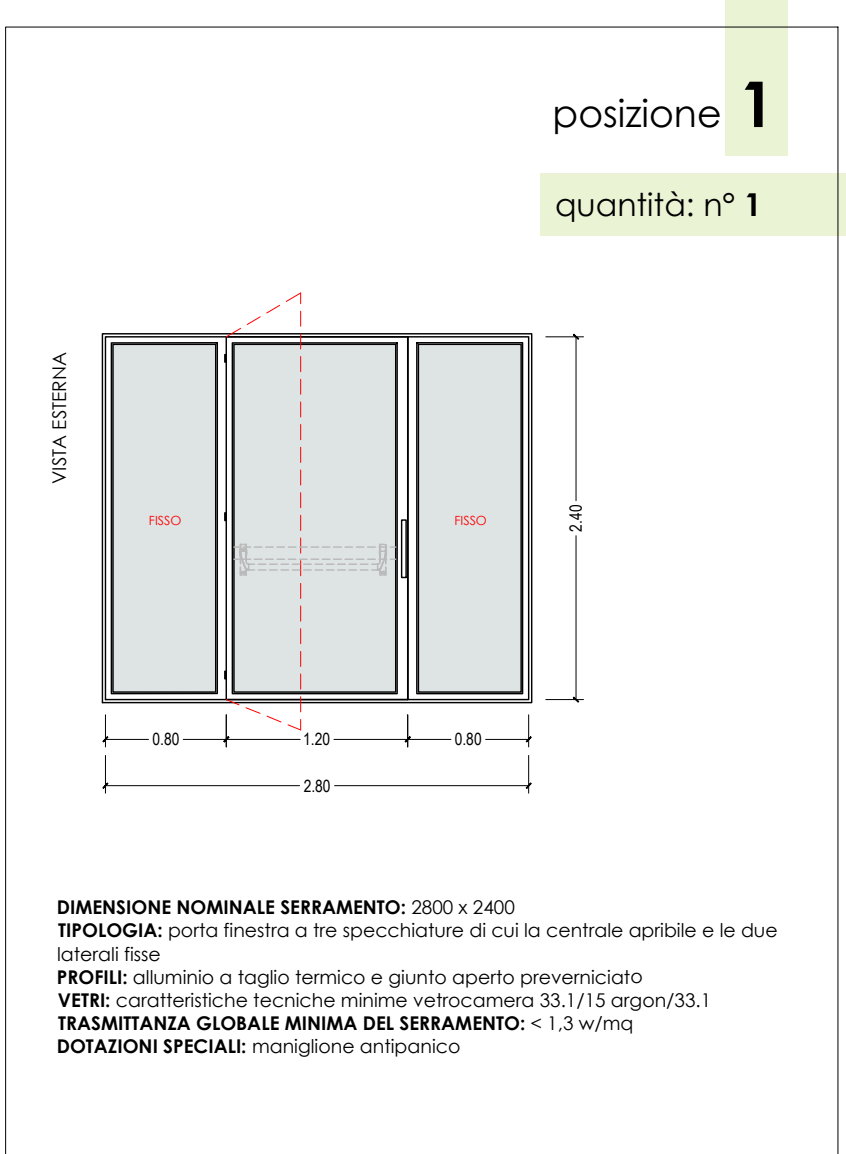


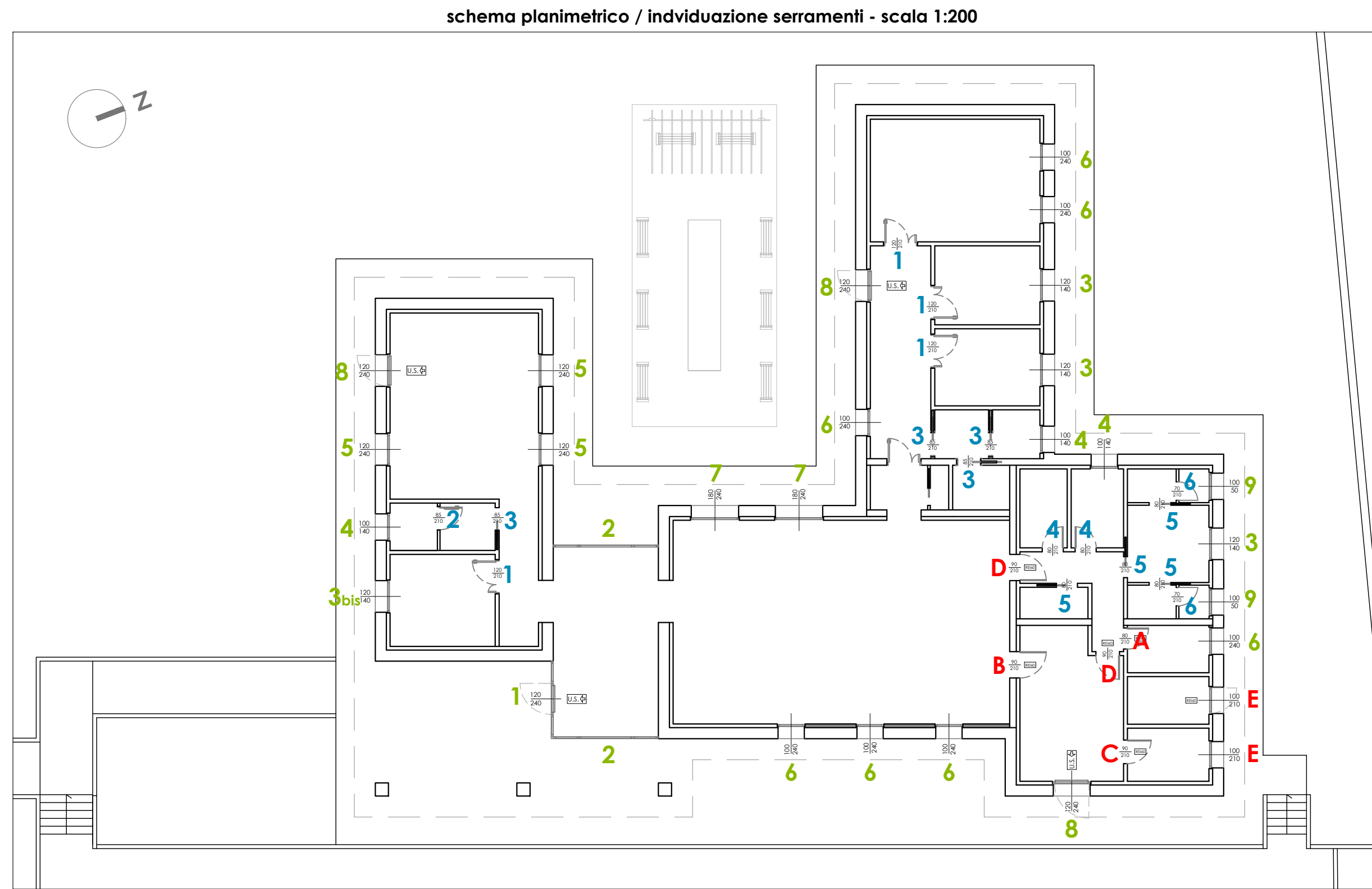
ABACO DEI SERRAMENTI TAGLIAFUOCO

ABACO DEI SERRAMENTI ESTERNI



NB - LE DIMENSIONI DEI SINGOLI SERRAMENTI ANDRANNO VERIFICATE IN LOCO DURANTE LA FASE ESECUTIVA

NB - LE DIMENSIONI DEI SINGOLI SERRAMENTI ANDRANNO VERIFICATE IN LOCO DURANTE LA FASE ESECUTIVA



PROGETTO ESECUTIVO
INTERVENTO DI REALIZZAZIONE NUOVO CENTRO DIURNO PER ANZIANI
"IL SOLE D'INVERNO"
Comune di Vigolzone (PC) - CUP: J75E25000160004



Committente:	COMUNE DI VIGOLZONE piazza Serena, 18 - 29020 Vigolzone (PC) c.f. 00009460306	visto ed approvato:	
Progetto:	Ufficio Tecnico Comune di Vigolzone STUDIO TECNICO Ing. Silvio Carini Stradone Farnese, 23/25 - 29121 Piacenza Tel./Fax: 0523-711318 - mobile: 333-289211 e-mail: ing.silvocarini@gmail.com p.e.c. silvio.carini@ngpec.eu	il Tecnico:	
Oggetto elaborato:	ABACO DEI SERRAMENTI ESETRNI, INTERNI E TAGLIAFUOCO	Fase:	Elaborato:
		ESE	AR 4.11
REV.	DATA	DESCRIZIONE	
00	novembre 2025	EMESSO PER APPROVAZIONE DEL PROGETTO ESECUTIVO	
01			
02			
02			
redatto:		controllato: Ing. Carini	note: